

# Valley Metro Update to American Society of Highway Engineers

Jessica Mefford-Miller  
Valley Metro CEO





# Valley Metro Overview

Mission, Service Profile & Performance

# Connect Communities + Enhance Lives





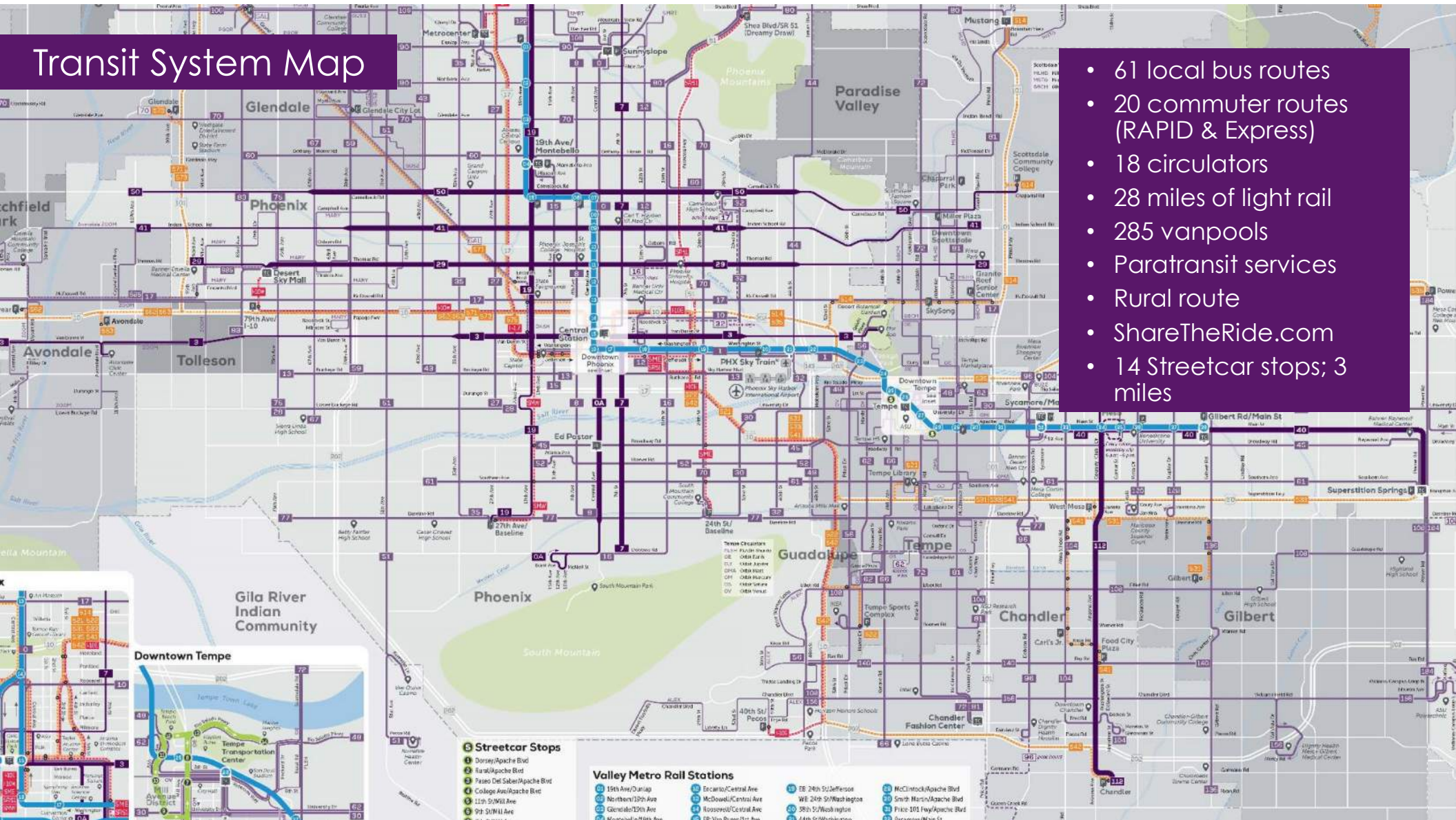
# Valley Metro Services

- Local and commuter bus
- Light rail + streetcar
- Neighborhood circulators
- Rural route
- Paratransit
- Vanpool
- Commuting alternatives
- Customer service & marketing

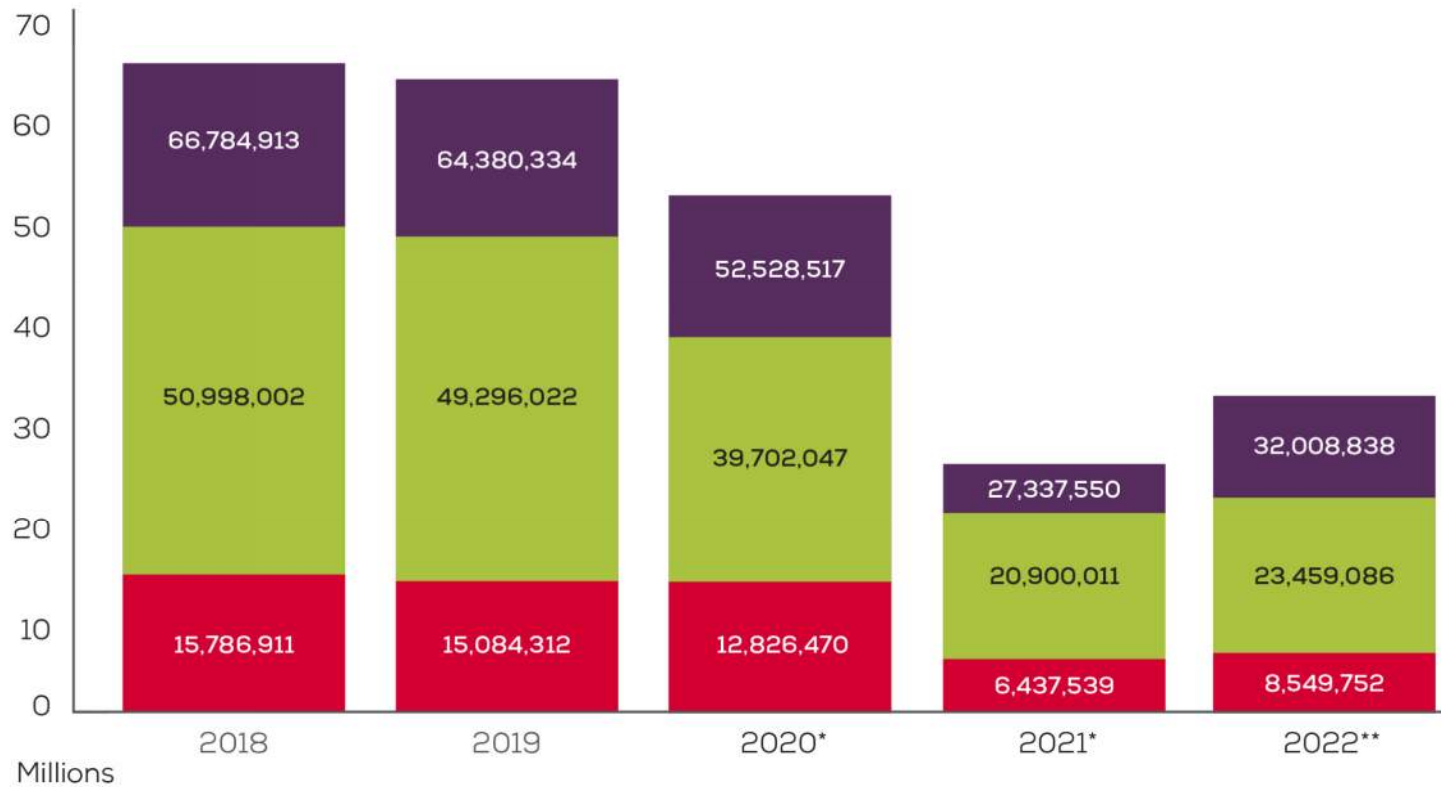


# Transit System Map

- 61 local bus routes
- 20 commuter routes (RAPID & Express)
- 18 circulators
- 28 miles of light rail
- 285 vanpools
- Paratransit services
- Rural route
- ShareTheRide.com
- 14 Streetcar stops; 3 miles



## Fiscal Years 2018-2022 Annual Ridership



\* In FY20 and FY21, ridership was significantly lower due to the impacts of COVID-19.

\*\* Rail figures include both light rail and streetcar; streetcar ridership began in May 2022.

■ Total Ridership ■ Bus ■ Rail\*\*





# Advancing Capital Projects

Service Performance & Program Expansion

# Tempe Streetcar



3 / 14 / 2

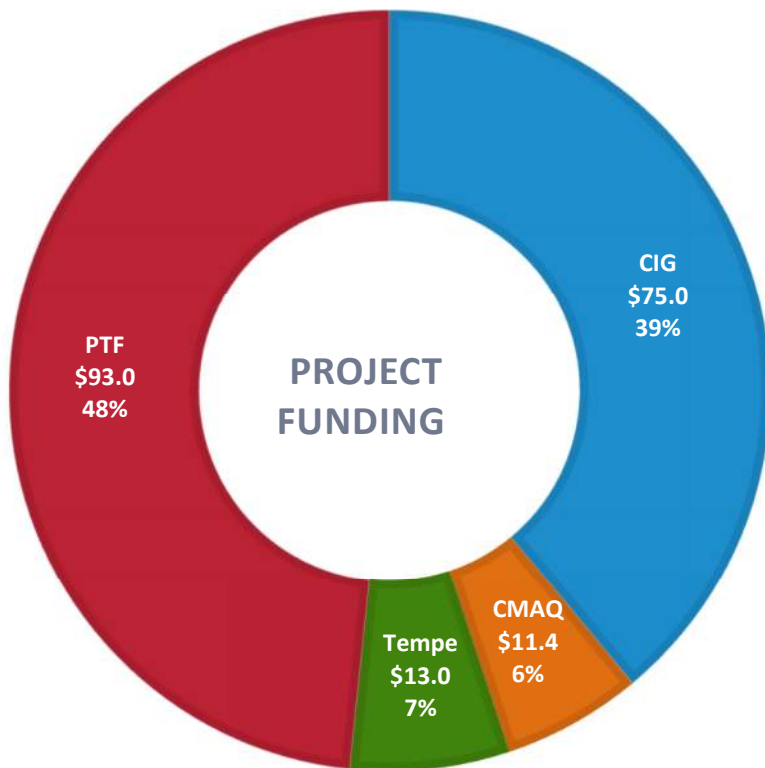
MILES / STOPS / CONNECTIONS TO VALLEY METRO RAIL





# Tempe Streetcar

Small Starts Capital Investments Grant (CIG)



**\$192.4**  
million

American Rescue Plan Act  
\$17.4 million







# Public Art









Eleventh St / Mill

1029

# South Central Extension / Downtown Hub







# South Central Extension Light Rail/ Downtown Hub

5.5

MILES

8

STATIONS

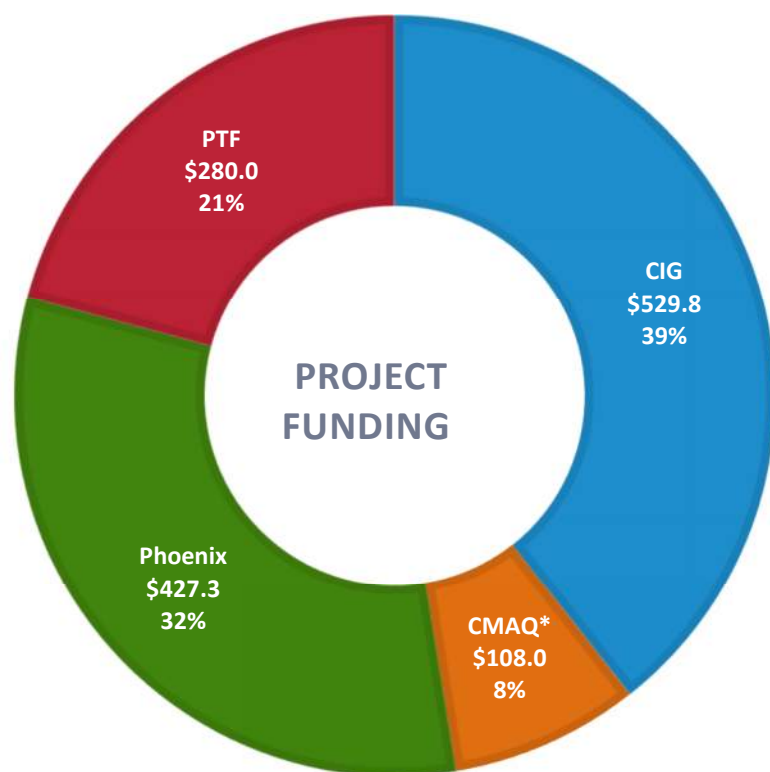
2

PARK-AND-RIDES

# South Central Extension / Downtown Hub



## New Starts Capital Investments Grant (CIG)



**\$1.345**  
billion

American Rescue Plan Act  
\$81.3 million

# South Central Phoenix







## Salt River Bridge

- **Scour Protection**
- **Bearing Pad Replacement**

# Northwest Phase II



# Northwest Extension Phase II

## *A Bridge to the West Valley*



1.6

MILES

1

PARK-AND-RIDE/  
TRANSIT CENTER

3

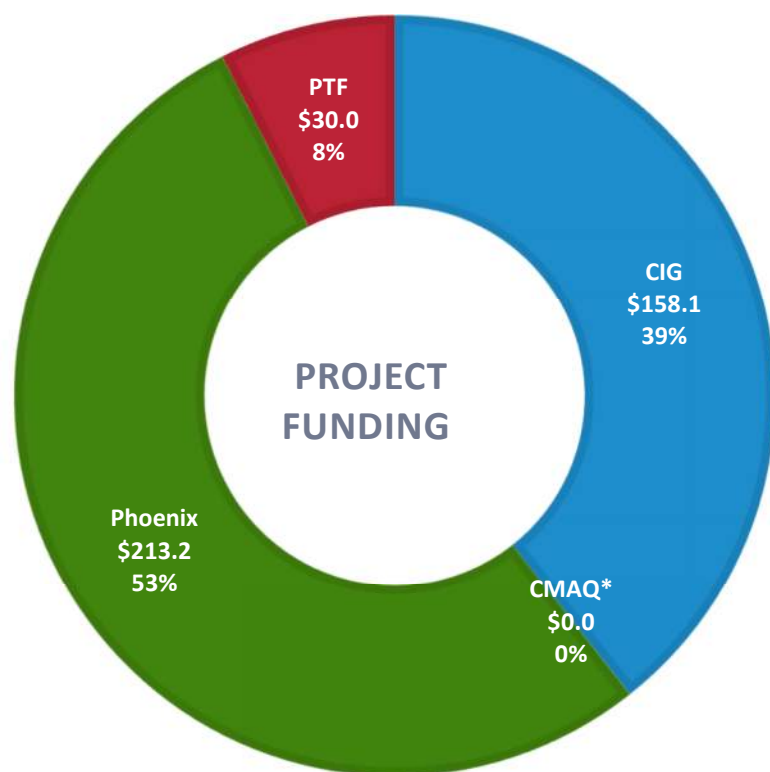
STATIONS





# Northwest Extension Phase II

New Starts Capital Investments Grant (CIG)



**\$401.3**  
million



## I-17 Bridge



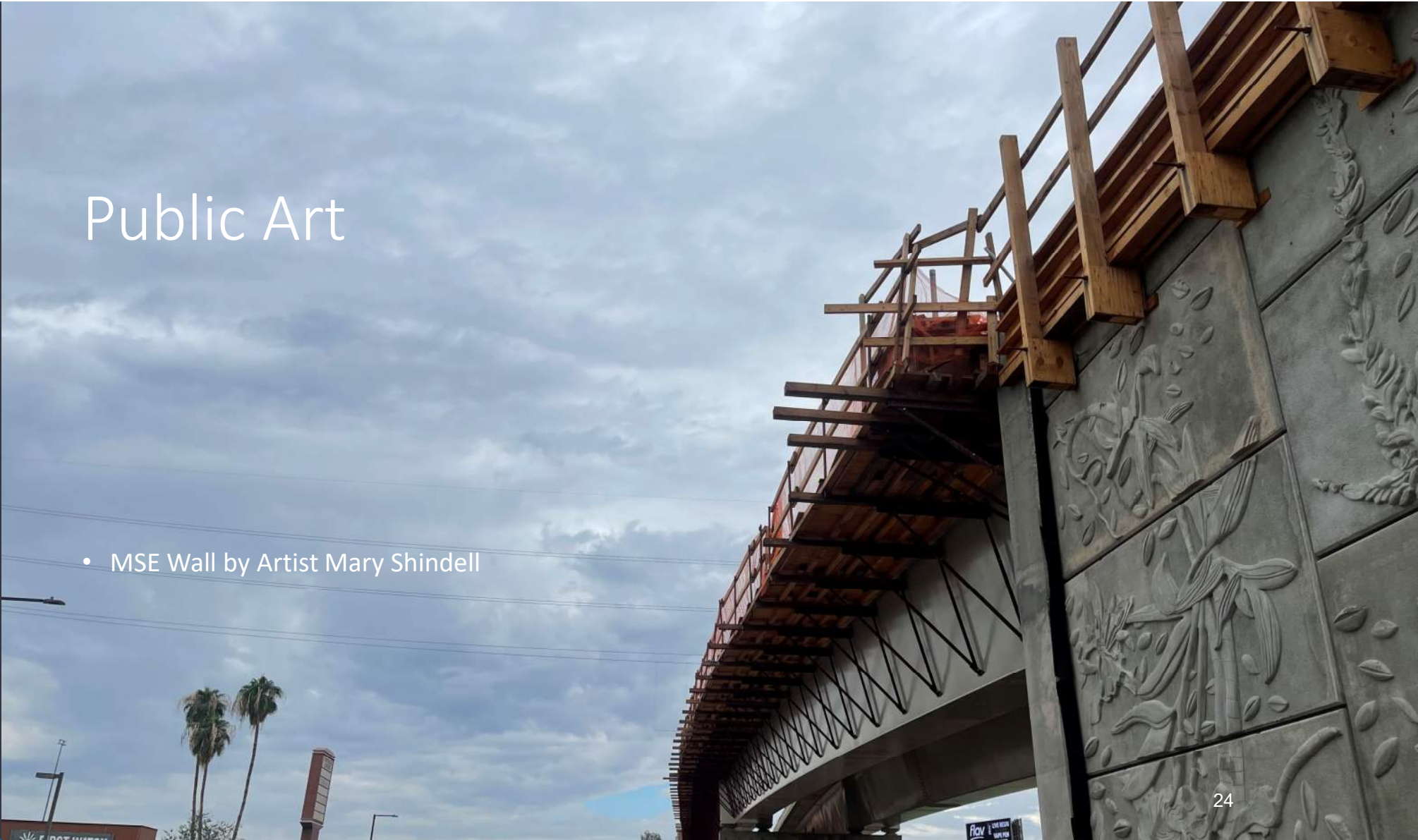


## Park and Ride and Elevated Stations Area

---

# Public Art

- MSE Wall by Artist Mary Shindell





# Welcoming new rail fleet

- Certified 10 new Siemens vehicles ahead of Super Bowl
  - This month: Expect first shipment of 14 expansion vehicles
- Continued work with Brookville on streetcar





# Our Future

Evolving Transit Through Uncertain Times



# Looking to the future

- Capitol Extension: 30% design; FTA's pipeline
  - RFP released April 2023
- Rio East-Dobson Streetcar: initiating study
  - Reviewing bids from on-call design firms



Getting  
involved—  
let's build  
off our

